

IRONING GUIDE

For Hot - fix transfer motifs which Nagel & Hermann trades with

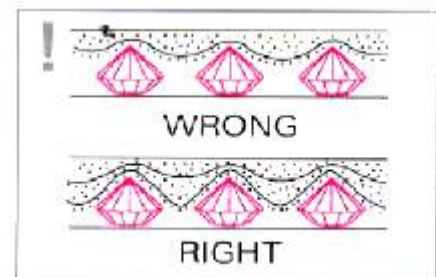
(strass motifs, sequine motifs, printing motifs, combined motifs, caviar motifs)

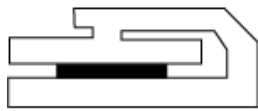
General Information and Requirements for the processing/application of Nagel & Hermann transfer motifs:

- Ironing - temperature 130°-180°C
- Pressing time 10 - 50sec
- Pressure ca. 0.3-0.5 kg /cm² / 40 PSI
or firm pressure
- After opening the fixing press please press on the motif again, so the still liquid glue can connect better with the fibers during the cool-down phase.

In general, the higher the temperature, the shorter the pressing time you need. Its better to use a slightly lower temperature and a longer pressing time. With this way of pressing, you can make sure, that the application is ok for this kind of cloth and the cloth is not destroyed. For

Swarovski Xilion it is better to use a lower temperature (between 130 and 160 °C). Begin with a low temperature and use a higher and higher temperature with less time, but ensure that the cloth is not burnt! If the application is not going to be fixed on the cloth, use a cotton cloth for testing if the application is working on this cloth and try with several parameters. Ensure that the used cloth has no silicone layer on the top, because the glue can't fix on silicone. Use a silicone pad to avoid empty spaces between the stones and the cloth, to guarantee a closed overlay (See above pictures).





CORRECT



INCORRECT



INCORRECT

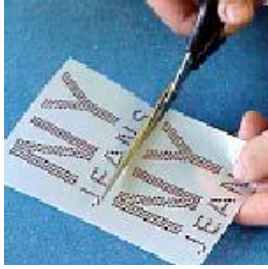


INCORRECT

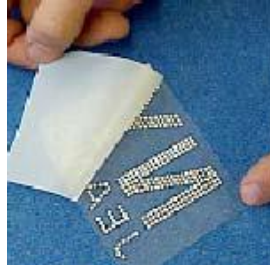
It is very important that the glue is melting and connecting correct with the fabric. This can be tested through a simple sight-test on the backside of the cloth, you need to see the glue coming through the cloth on the whole area of the stone, this is the guarantee that the stone is fixed correctly.

The above settings are only suggestions and should always be tested on your material first. The bottom of the heat press should have a 1/4" (5-8mm) silicone pad 8 or any smooth layer like silicone pad, felt, plastic rubber) so that the pressure is distributed evenly over the transfer. Some fabrics that are treated with or contain silicone are difficult to work with. The glue may not adhere to the fabric. The best procedure to apply elements is to iron them from the backside, means that the temperature is melting the glue through the cloth from the backside. To be sure that the transfer is afixed properly, do a test wash or dry clean. We guarantee our products, but not the finished product, as we have no control over the operator, or quality of the equipment.

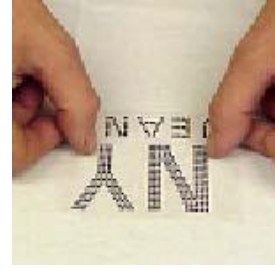
NOTE: The temperature displayed on the heat press is not always accurate. Please check it with a thermometer. The heat decreases around the edges of the press. Never use a hand iron, household or industrial.



Cut the transfer from the sheet



Remove the protection film



Place motif on your garment



Press procedure



Remove the transfer film

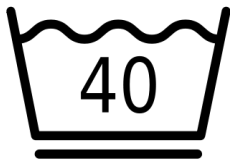


Final result

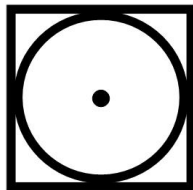
Note! On position Nr. 5: Let the motif cool off a little bit and strip off the foil. The right moment to strip off the foil should be found out through tests.

WASHING GUIDE

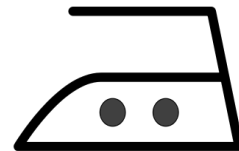
For Hot - Fix motifs which are produced from N&H. This guide is valid for all Hot Fix articles of N&H:



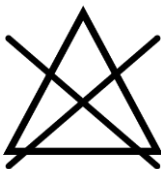
**Wash up to 40° C or 100° F
Wash from left side!**



**Drying is no problem!
Dry from left side!
Do not dry pearls!**



**Iron from left side!
Uncover the hot-fix articles!**



Do not bleach!



Chemical cleaning is no problem!

All articles delivered through N&H are salt and chlorine -water resistant, but the customer has to test the durability on the used cloth himself.

FAQ

WHAT TO DO, IF...	Application temperature	Application time	Pressure	Silicone Pad
...the transfer elements do not adhere to the fabric	Possible causes: Too low Unequal temperature distribution on the heating surface	Possible causes: not enough time	Possible causes: Not enough pressure or the heat press doesn't close parallel	Possible causes: Too soft or too thick Too hard or too thin
	Solution: Set temp.exactly at 170 ° C or 340°F, Check the temp. with a thermometer	Solution: Apply for longer time	Solution: Increase pressure for thick, rigid fabrics, Align the press correctly	Solution: Test different silicone pads to find the ideal heat pad
... the glue runs onto the fabric	Possible cause: temperature too high	Possible causes: Too much time	Possible cause: Too much	Possible cause: Too hard
	Solution: Set the temp.at exactly 170 deg.C or 340° F	Solution: Reduce the time for thin fabrics	Solution: Reduce pressure for thin fabrics	Solution: Use hard felt or silicone foam
... the Transfer foils leave impressions on pressuresensitive textiles such as velvet, knitwear, etc.	Possible cause: temperature too high	Possible cause: Too much time	Possible cause: Too much	Possible cause: Too hard
	Solution: Reduce the temperature to 170 °C or 340° F, Steam the fabric piece on the reverse side	Solution: Reduce the application time steam the fabric piece on the reverse side	Solution: Reduce the pressure, Steam the fabric piece	Solution: Switch from hard felt to soft silicone
... the Transfer motifs have to be applied to multilayer fabric parts such as seams, bags, collars, cuffs,		Lengthen the application time, because multi-layer fabrics take longer for the adhesive to melt	Use high contact pressure	Select the pad permitting optimal contact between the Transfer motif and heating plate, e.g. for pocket borders balance out the height by inserting exactly cut pieces of felt
... the Transfer motifs has to be applied to suede leather	Pre-shrink the material= 1-2x without Transfer 10 sec at 170 °C in the heat press	Begin with a shorter application time – perform test	Select medium pressure	Select siliconepad